

- ✓ **Rapid flushout, knockdown and kill**
- ✓ **Easy to use**

**BROAD SPECTRUM INSECTICIDAL SMOKE GENERATOR.**



A ready to use insecticidal smoke generator for general disinfestation indoors, containing Permethrin, 13.35 % w/w and potassium chlorate. The insecticidal smoke will control insects present at the time of treatment by direct contact action (space treatment). The (COSHH) Control of Substances Hazardous to Health Regulations may apply to the use of this product at work.

Public Hygiene Areas: Hospitals (not occupied wards), Hotels, Public baths, Industrial buildings, Municipal buildings, Churches, Halls, Community centres, Cinemas

Small Animal Housing: Zoos, Pet shops, Kennels, Veterinary practices, Laboratory animal houses (excluding pens and cages).

Safety information

**COOPEX<sup>®</sup> MINI SMOKE GENERATOR**  
Contains Permethrin 13.35 % w/w  
Contains potassium chlorate

**WARNING**

**Harmful if swallowed.**  
**May cause an allergic skin reaction.**  
**Causes serious eye irritation.**  
**May cause respiratory irritation.**  
**Very toxic to aquatic life with long lasting effects.**

Wear protective gloves/protective clothing/eye protection/face protection.  
IF exposed or concerned: Call a POISON CENTER or doctor/physician.  
Dispose of contents/container to a licensed hazardous-waste disposal contractor or collection site except for empty clean containers which can be disposed of as non-hazardous waste.  
**To avoid risks to human health and the environment, comply with the instructions for use.**

HSE 5130

**FOR USE ONLY BY PROFESSIONAL OPERATORS**  
**FOR INDOOR USE ONLY**  
**FOR USE ONLY AS AN INSECTICIDE**

**Flying insects:**

For the control of flying insects e.g. houseflies, cluster flies, mosquitoes, fruit flies, wasps and moths.

**Crawling insects:**

Aids the control of crawling insects e.g. fleas, bed bugs, ants, cockroaches, and stored product insects e.g. Saw-toothed grain beetles and adult grain weevils.

**DIRECTIONS FOR USE:**

For use in the following situations:

Domestic: e.g. private housing.

Food handling:

Processing: Food manufacture, kitchens, slaughterhouses etc.

Storage: Food retailers, warehouses, raw material stores etc.

Preparation: Restaurants, commercial kitchens.

NOT FOR USE ON GRAIN OR EMPTY GRAIN STORES.

Remove/cover processed foodstuffs, utensils and food preparation equipment.

Cover unprocessed foodstuffs.

Seal area to be treated as effectively as possible.

Close doors and windows, block fire places and exclude draughts.

Clear people, plants and animals, including fish, from the area to be treated.

Take the required number of smoke generators.

Tear off the tag and remove the container cap.

Place each smoke generator on a fireproof base approximately 300 mm x 300 mm but NOT in a bucket or other enclosed space.

When a number of generators are being used, space them throughout the area to be treated and prepare all for ignition before lighting the first.

Light the ignitor using a match.

Do not leave lighted match on generator.

Light smoke generators in sequence, starting with the furthest from an identified exit.

Leave for not less than two hours or one hour per 1.5 m ceiling height.

After treatment is complete, open windows and doors and ventilate thoroughly.

The product may be used to treat empty bins and stores, or spaces where unprocessed foodstuffs are protected from deposits of the insecticide by means of a covering not more permeable than twill jute sacking.

**FLEA CONTROL:**

Where infestations are associated with domestic animals, the animals should be treated using a suitable veterinary product. The animals bedding and other infested areas should be treated with K-Othrine<sup>®</sup>.

Thorough cleaning of the premises will also contribute to flea control and reduce to opportunity for further infestation.

**BEDBUG CONTROL:**

Thorough cleaning, including laundering of bedding will assist the control of bedbug infestations.

In addition the mattress should be treated with K-Othrine<sup>®</sup>.

**WARNINGS:**

Do not apply smoke in the presence of plants.

Ventilate areas thoroughly after treatments.

# **COOPEX**<sup>®</sup>

## Mini Smoke Generator

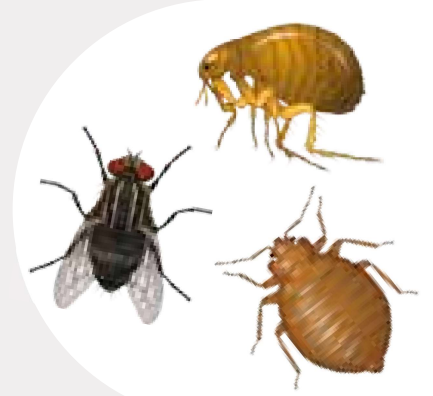
### Insecticide

- ✓ **Rapid flushout, knockdown and kill**
- ✓ **Easy to use**



**WARNING**

Safety information  
**COOPEX<sup>®</sup> MINI SMOKE GENERATOR**  
Contains Permethrin 13.35 % w/w, Contains potassium chlorate  
**Harmful if swallowed.**  
**May cause an allergic skin reaction.**  
**Toxic to aquatic life with long lasting effects.**  
Wear protective gloves/protective clothing/eye protection/face protection.  
IF SWALLOWED: Call a POISON CENTRE/doctor if you feel unwell.  
IF ON SKIN: Wash with plenty of soap and water.  
Dispose of contents/container to a licensed hazardous-waste disposal contractor or collection site except for empty clean containers which can be disposed of as non-hazardous waste.  
**To avoid risks to human health and the environment, comply with the instructions for use.**  
**HSE 5130**



**6 x 35 Generators x 3.5 g**

**envu**<sup>™</sup>

**Broad Spectrum Insecticidal Smoke Generator**

**ARTICLE 04359444**

**FOR USE ONLY BY PROFESSIONAL OPERATORS  
FOR INDOOR USE ONLY  
FOR USE ONLY AS AN INSECTICIDE**

When stored in a dry place at temperatures not exceeding 25°C, Coopex<sup>®</sup> Mini Smoke Generator have a shelf life of 3 years.

This product is approved under The Control of Pesticides Regulations 1986 for use as directed (HSE 5130).

*Authorisation holder and marketing company :*

2022 Environmental Science FR SAS

Milton Hall, Ely Rd, Milton, Cambridge, CB24 6WZ

24 Emergency information contact: Telephone +44 20 3807 3798

Further information is available from: 00800 12149451

[www.uk.envu.com](http://www.uk.envu.com) for SDS and larger label

Envu, the Envu logo and Coopex<sup>®</sup> are trademarks owned by Environmental Science U.S. LLC or one of its affiliates

Batch number: see the pack  
Expiry date: see the pack

GB84427268E - A8

**PRECAUTIONS**

The (COSHH) Control of Substances Hazardous to Health Regulations 2002 (as amended) may apply to the use of this product at work.

Engineering control of operator exposure must be used where reasonably practicable in addition to the following personal protective equipment:

WEAR SUITABLE PROTECTIVE CLOTHING (COVERALLS), SYNTHETIC RUBBER/PVC GLOVES AND EYE PROTECTION when using the product. DO NOT BREATHE SMOKE. Otherwise wear respiratory protective equipment and eye protection (see HSE Guidance Booklet HS (G) 53 "Respiratory Protective Equipment- A practical guide for users"). AVOID EXCESSIVE CONTAMINATION OF COVERALLS AND LAUNDRER REGULARLY.

However, engineering controls may replace personal protective equipment if a COSHH assessment shows they provide an equal or higher standard of protection.

AVOID naked flames and hot surfaces.  
FOR INDOOR USE ONLY:  
VACATE TREATMENT AREAS BEFORE APPLICATION.

Do not disturb bats or their roost. This may influence the use of Coopex® Mini Smoke Generator in roof spaces etc. No treatment should be made without first ascertaining whether bats use the site as a roost.

ALL BATS ARE PROTECTED UNDER THE WILDLIFE AND COUNTRYSIDE ACT 1981 or the Wildlife (Northern Ireland) order (1985).

BEFORE TREATING ANY STRUCTURE USED BY BATS, CONSULT ENGLISH NATURE, SCOTTISH NATURAL HERITAGE OR THE COUNTRYSIDE COUNCIL FOR WALES OR DEPARTMENT OF THE ENVIRONMENT FOR NORTHERN IRELAND.

DO NOT CONTAMINATE FOODSTUFFS, EATING UTENSILS OR FOOD CONTACT SURFACES.  
EXTREMELY DANGEROUS TO FISH AND OTHER AQUATIC LIFE.  
REMOVE OR COVER ALL FISHTANKS AND BOWLS before application.  
COVER WATER STORAGE TANKS before application.  
HAZARDOUS TO BEES.  
DISPOSE OF USED GENERATOR SAFELY.  
KEEP IN A SAFE PLACE, out of reach of children  
KEEP OFF SKIN.  
WASH HANDS AND EXPOSED SKIN, before meals and after use.  
Use appropriate containment to avoid environmental contamination.

**STATUTORY CONDITIONS OF APPROVAL RELATING TO USE**

**FOR USE ONLY AS AN INSECTICIDE**  
**FOR USE ONLY BY PROFESSIONAL OPERATORS**

Application rates:  
 Flying insects . . . . . 1 generator per 120 cubic meters  
 Fleas and Bed bugs . . . . . 1 generator per 30 cubic meters  
 Other crawling insects (such as ants and cockroaches) . . . . .  
 . . . . . 1 generator per 7.5 cubic meters

NOT FOR USE ON GRAIN OR EMPTY GRAIN STORES.  
 Users must comply in full with all their legal responsibilities under the Control of Pesticides Regulations 1986 (as amended), including complying with all Conditions of Approval.

**READ ALL PRECAUTIONS BEFORE USE.**

**HSE 5130**

When stored in a dry place at temperatures not exceeding 25°C, Coopex® Mini Smoke Generator have a shelf life of 3 years. This product is approved under The Control of Pesticides Regulations 1986 for use as directed (HSE 5130).

Authorisation holder and marketing company :  
2022 Environmental Science FR SAS  
Milton Hall, Ely Rd, Milton, Cambridge, CB24 6WZ  
24 Emergency information contact: Telephone +44 20 3807 3798  
Further information is available from: 00800 12149451  
www.uk.envu.com for SDS and larger label

Envu, the Envu logo and Coopex® are trademarks owned by Environmental Science U.S. LLC or one of its affiliates

Batch number: see the pack  
Expiry date: see the pack